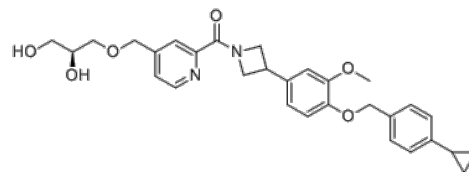


**Product Name** : JTE-952  
**Cat. No.** : PC-36143  
**CAS No.** : 1255303-54-8  
**Molecular Formula** : C<sub>30</sub>H<sub>34</sub>N<sub>2</sub>O<sub>6</sub>  
**Molecular Weight** : 518.61  
**Target** : c-Fms (CSF1R)  
**Solubility** : 10 mM in DMSO



### Biological Activity

JTE-952 (JTE952) is a potent, selective colony stimulating factor-1 receptor (**CSF1R**) type II inhibitor with IC<sub>50</sub> of 14 nM, shows cellular activity in BMMCs IL-6 secretion assays with IC<sub>50</sub> of 20 nM.

JTE-952 is also effective against a mouse collagen-induced model of arthritis (mouse CIA-model).

### References

Ikegashira K, et al. *Bioorg Med Chem Lett*. 2019 Apr 1;29(7):873-877.

**Caution: Product has not been fully validated for medical applications. Lab Use Only!**

E-mail: tech@probechem.com